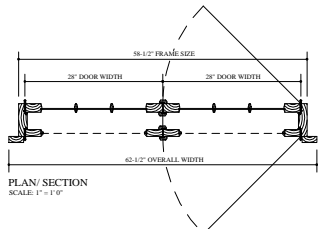
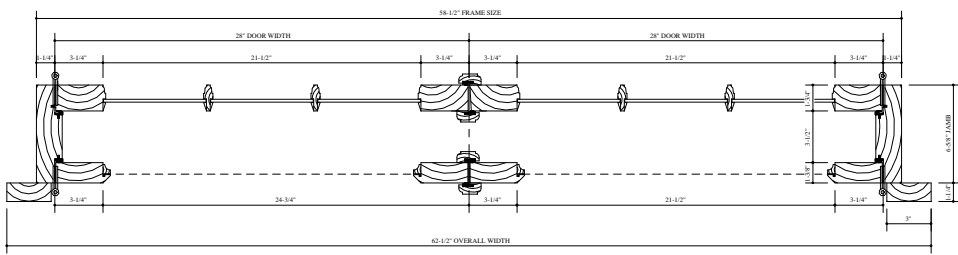


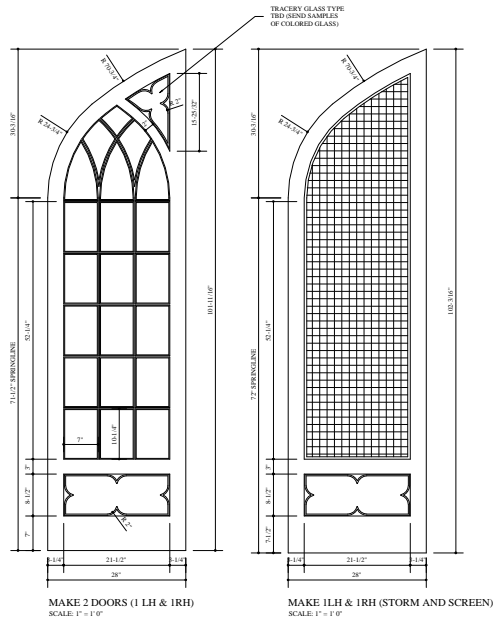
EXTERIOR ELEVATION (1 UNIT)  
SCALE: 1" = 1'0"



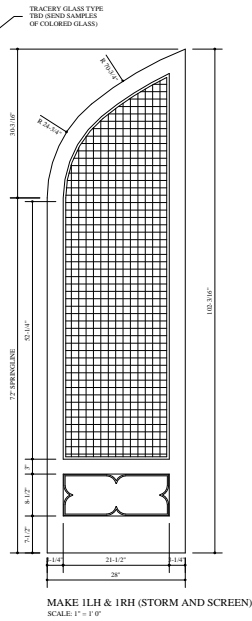
PLAN / SECTION  
SCALE: 1" = 1'0"



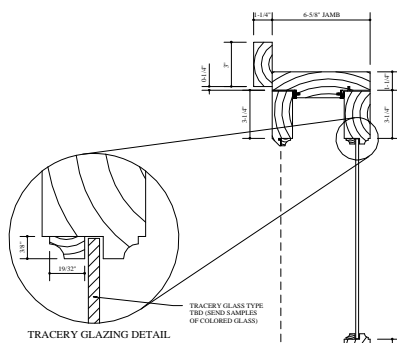
PLAN / SECTION  
SCALE: 3" = 1'0"



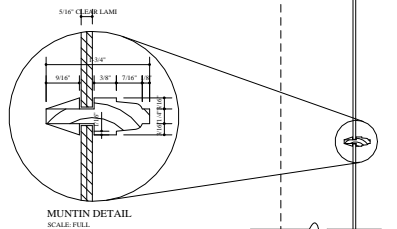
MAKE 2 DOORS (1 LH & 1 RH)  
SCALE: 1" = 1'0"



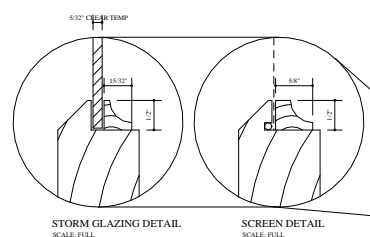
MAKE 1 LH & 1 RH (STORM AND SCREEN)  
SCALE: 1" = 1'0"



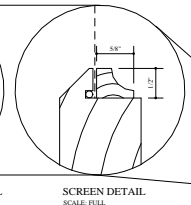
TRACERY GLAZING DETAIL  
SCALE: FULL



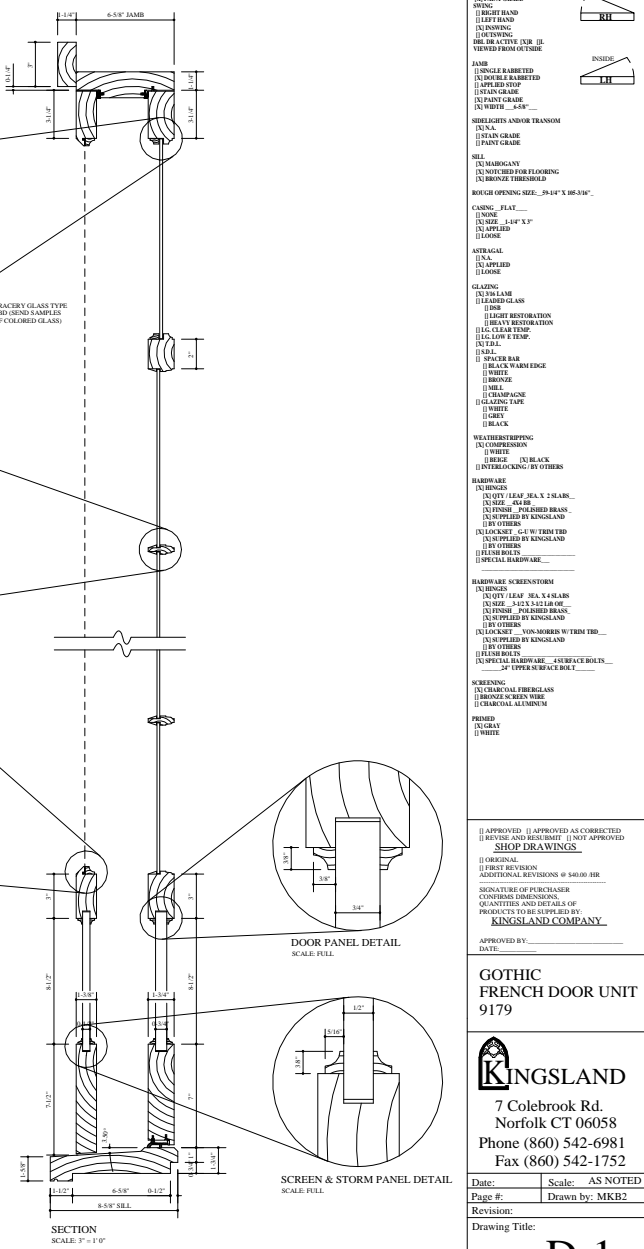
MUNTIN DETAIL  
SCALE: FULL



STORM GLAZING DETAIL  
SCALE: FULL



SCREEN DETAIL  
SCALE: FULL



SECTION  
SCALE: 3" = 1'0"

DOOR (1) LHS (1) RHS (1) STAIN GLASS (1) SMOOTH GLASS (1) SMOOTH GLASS (1) RIGHT HAND (1) LEFT HAND (1) FINISHING (1) COATING (1) OR DEACTIVE EXR II (1) VIEWED FROM OUTSIDE	
JAMB (1) SINGLE RABBETED (1) DOUBLE RABBETED (1) MITER TOP (1) STAIN GLASS (1) SMOOTH GLASS (1) WIDTH - 4.54"	
SIDELIGHTS AND/OR TRANSOM (1) N/A (1) STAIN GLASS (1) SMOOTH GLASS	
SHL (1) N/A (1) N/A (1) NOTCHED FOR FLOORING (1) ABOVE THRESHOLD	
ROUGH OPENING SIZE - 29.44" X 86.33"	
CASING - FLAT (1) N/A (1) SIZE - 1.44" X 3"	
ASTRAGAL (1) N/A (1) APPLIED (1) NONE	
GLAZING (1) N/A (1) LAMINATED GLASS (1) LIGHT RESTORATION (1) HEAVY RESTORATION (1) CLEAR TEMP. (1) CLEAR LOW TEMP. (1) TINTED	
GLASS (1) SMOOTH GLASS (1) BLACK WARM EDGE (1) NONE (1) BRONZE (1) WHITE (1) OTHER	
WEATHERSTRIPPING (1) COMPRESSION (1) WHITE (1) BLACK (1) EXTRUSION (BY OTHERS)	
HARDWARE (1) HINGE (1) LATCH (1) LEAK SEAL (1) N/A (1) SIZE - 3/16" X 1/2" L x 1/8" W (1) FINISH - POLISHED BRASS (1) SUPPLIED BY KENSLAND (1) BY OTHERS (1) LOCKSET - 6-1/2" W TYPED (1) SUPPLIED BY KENSLAND (1) BY OTHERS (1) FLUSH BOLTS (1) SPECIAL HARDWARE	
HARDWARE SCREENS/STORMS (1) HINGE (1) LATCH (1) LEAK SEAL (1) N/A (1) SIZE - 3/16" X 1/2" L x 1/8" W (1) FINISH - POLISHED BRASS (1) SUPPLIED BY KENSLAND (1) BY OTHERS (1) LOCKSET - 6-1/2" W TYPED (1) SUPPLIED BY KENSLAND (1) BY OTHERS (1) FLUSH BOLTS (1) SPECIAL HARDWARE (1) UPPER OR RABBIT BALL	
SCREENING (1) CARBONAL FIBERGLASS (1) BRONZE SCREEN WIRE (1) CHARCOAL ALUMINUM	
FINISH (1) BRASS (1) WHITE	
(1) APPROVED (1) APPROVED AS CORRECTED (1) REVISE AND RESUBMIT (1) NOT APPROVED <b>SHOP DRAWINGS</b> (1) ORIGINAL (1) FIRST REVISION ADDITIONAL REVISIONS @ \$40.00 PER SIGNATURE OF PURCHASER QUANTITIES AND DETAILS OF PRODUCTS TO BE SUPPLIED BY <b>KENSLAND COMPANY</b>	
APPROVED BY: DATE:	
<b>GOTHIC FRENCH DOOR UNIT 9179</b>	
7 Colebrook Rd. Norfolk CT 06058 Phone (860) 542-6981 Fax (860) 542-1752	
Date:	Scale: AS NOTED
Page #:	Drawn by: MKB2
Revision:	
Drawing Title:	
<b>D-1</b>	